



VIA FRANCESCO BOCCHI, 11R  
FIRENZE 50126 ITALIA  
TEL +39 0550517269  
FAX +39 0550518788  
[info@nemogruppo.com](mailto:info@nemogruppo.com)  
[www.nemogruppo.com](http://www.nemogruppo.com)



**NEMOGRUPPO** <sup>TM</sup> ARCHITETTI  
© 2007  
2009

nEмоGruppo Architetti ha una esperienza multidisciplinare in:  
*has multi-disciplinary experience in:*

- architettura | *architectural design*
- allestimenti | *set design*
- product design
- architectural image design

per maggiori informazioni contattateci:

*Please feel free to contact us:*

[info@nemogruppo.com](mailto:info@nemogruppo.com)

o visitate il nostro sito internet:

*or visit our internet site:*

[www.nemogruppo.com](http://www.nemogruppo.com)

CONTATTI: nEмоGruppo Architetti

VIA FRANCESCO BOCCHI 11R FIRENZE 50126 ITALIA

TEL +39 0550517269 FAX +39 0550518788

[info@nemogruppo.com](mailto:info@nemogruppo.com)

[www.nemogruppo.com](http://www.nemogruppo.com)

■ architettura | *architectural design*



Crediamo che la buona progettazione sia un valore aggiunto.  
L'Architettura genera valore. L'Architettura determina il valore di un luogo interpretandone  
il "genius loci" attraverso la realizzazione di manufatti che gratificano l'occhio e  
soddisfano alti standard di funzionalità ed efficienza allo stesso tempo.  
La nostra ricerca si concentra sull'interpretazione dello spazio in maniera emozionale;  
i nostri progetti cercano la risposta al bisogno del benessere, i sensi vengono guidati  
nell'interazione tra lo spazio e il fruitore.

*We believe that good design means increase in value.*

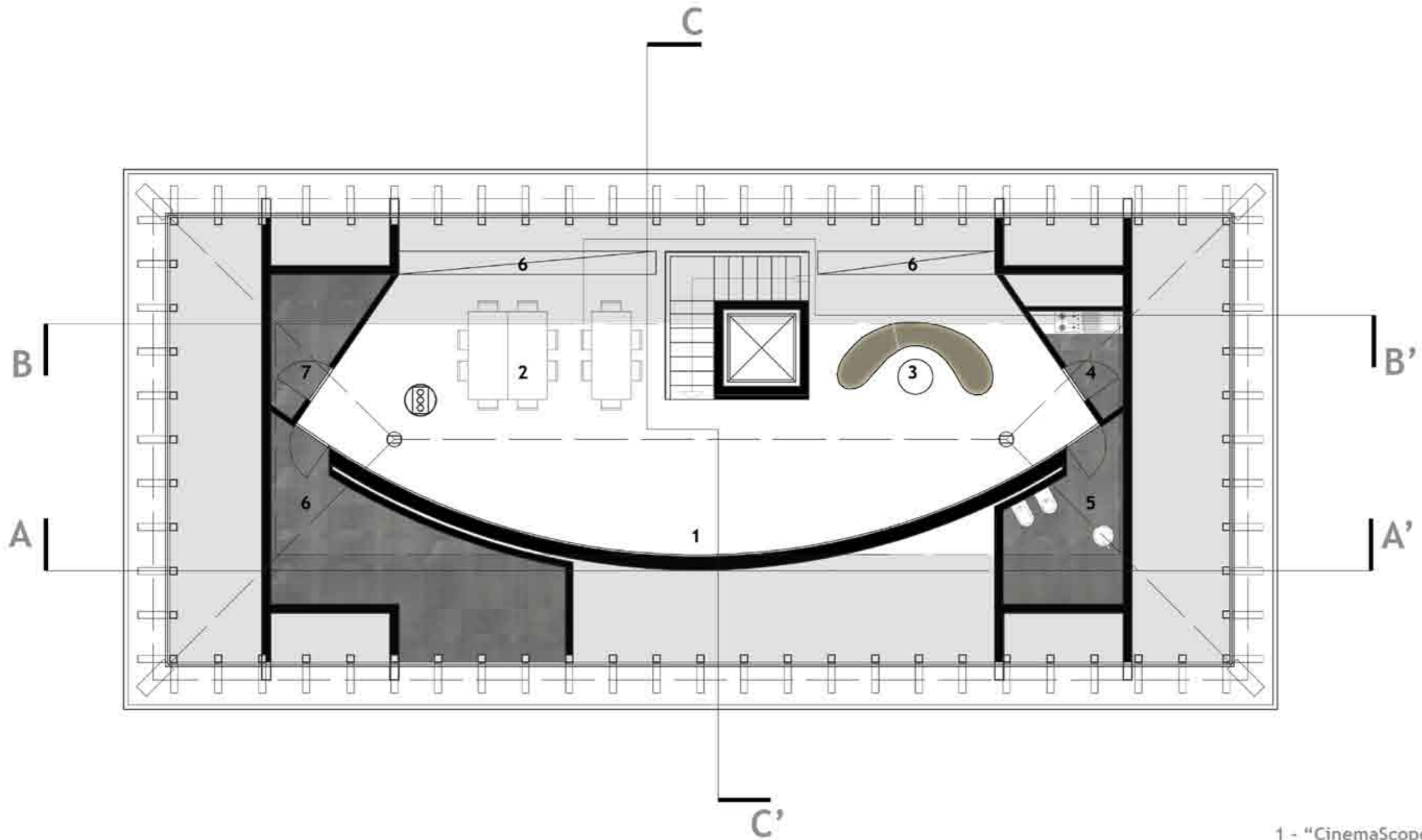
*Architecture creates value. Architecture increases the value of a site by interpreting the  
"genius loci" through the realization of a building that gratifies the eye with its artistic  
qualities and fulfills high standards of functionality and efficiency at the same time.  
Our research is focused on the interpretation of space on an emotional way; our projects try  
to answer to the need of well being, senses are led through the interaction between  
space and the individual.*

*i nostri clienti | our clients*

- *privati | private*
- *società | companies*
- *enti pubblici | public institutions*

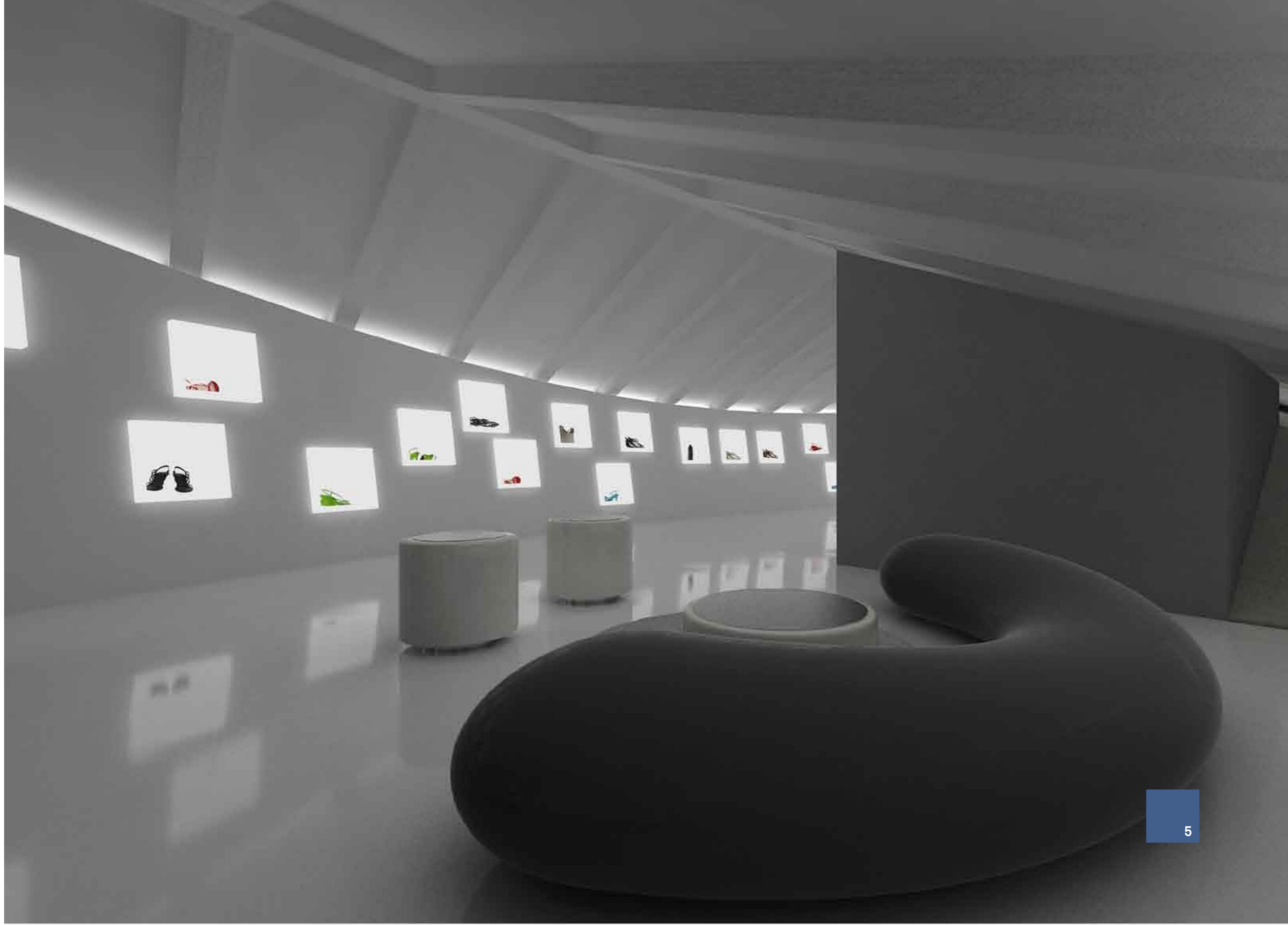
*tra cui | among others*

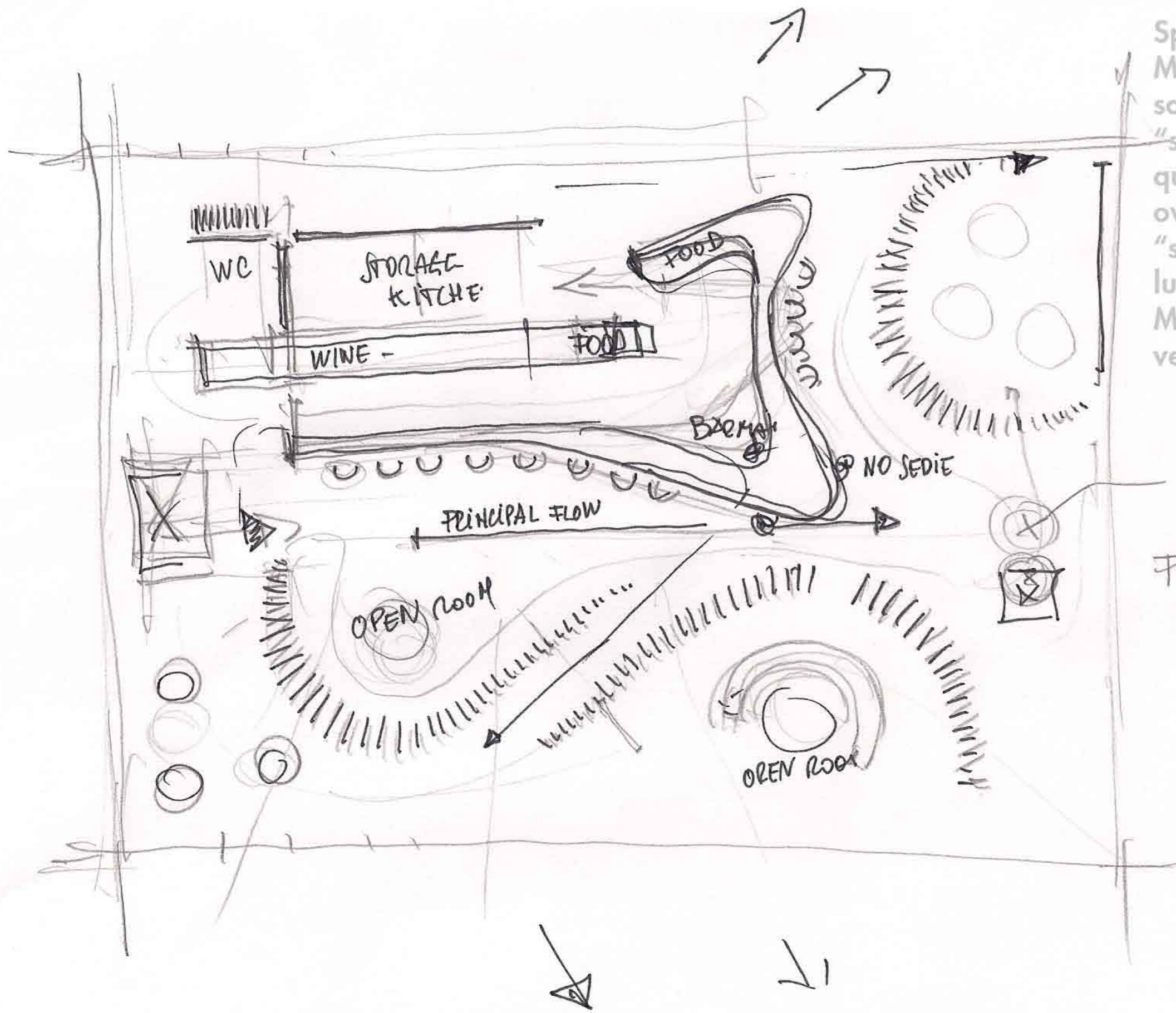
- *Salvatore Ferragamo s.p.a.*
- *Finanziaria Saccarifera Italo-Iberica*
  - *CVP Yachting Club*
- *città di Bilbao | Bilbao Municipality*
  - *città di Roma | Roma Municipality*
  - *città di Capua | Capua Municipality*
  - *città di Narni | Narni Municipality*
- *città di Oderzo | Oderzo Municipality*
  - *Conservatoire des Parcs et Jardins*
    - *Studio Archea Associati*
    - *Studio Salvatore Re*
    - *Studio Marcon*
    - *Studio Tori*



- 1 - "CinemaScopeStock"
- 2 - Area lavoro
- 3 - Lounge Area
- 4 - Cucina
- 5 - Servizi Igienici
- 6 - Stock
- 7 - Spogliatoio/Stock





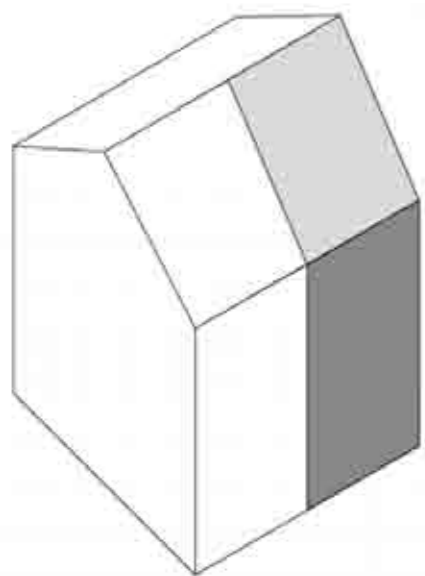


Spazio traslucido,  
 Massima trasparenza, non vi  
 sono chiusure vi sono solo  
 "soglie" formate da elementi  
 quasi scultorei. Visione  
 ovunque anche se vi sono delle  
 "stanze" per creare delle storie  
 lungo un percorso principale.  
 Ma si può sempre traguardare  
 verso la città e il mare.

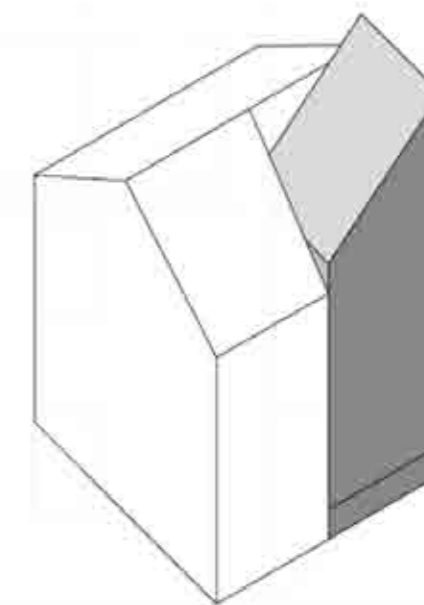
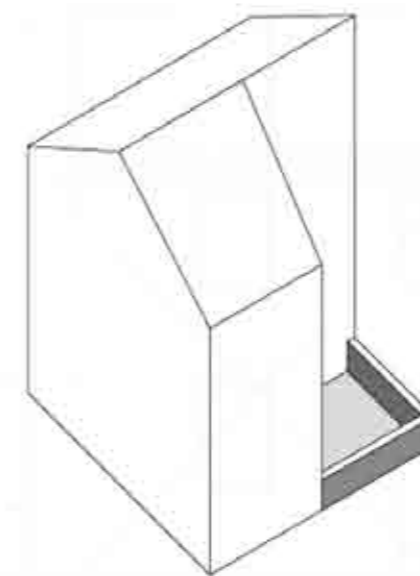
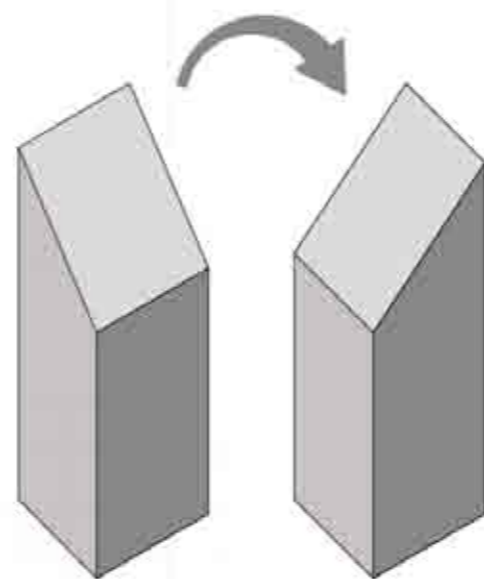
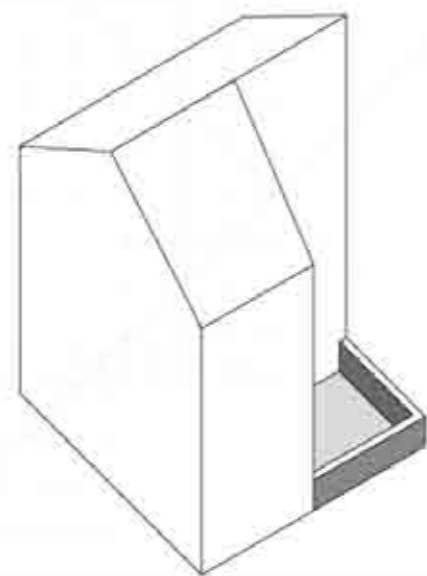
OPEN  
 FOCUS POINT  
 legger



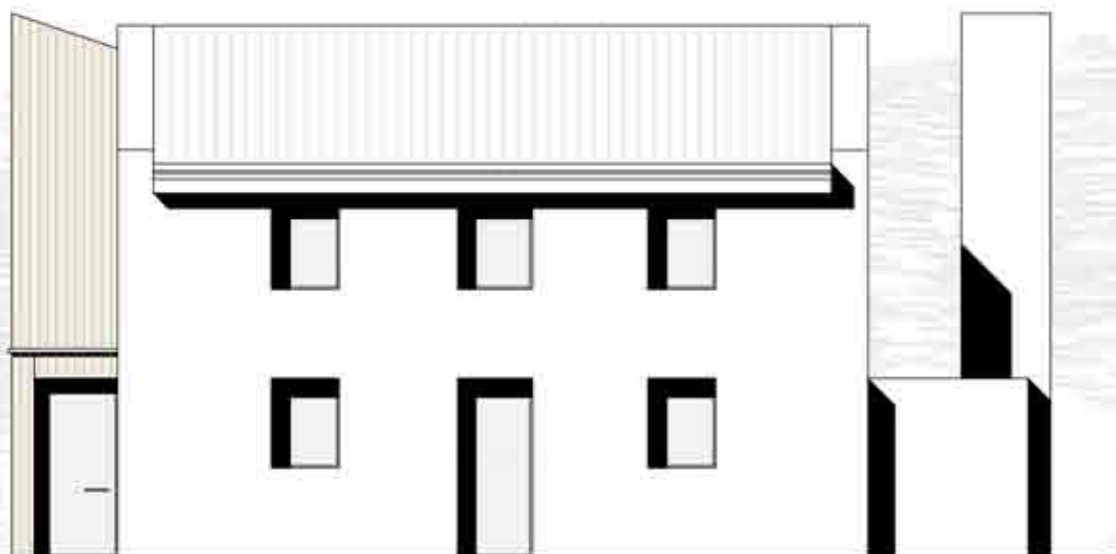




**a room without a view**



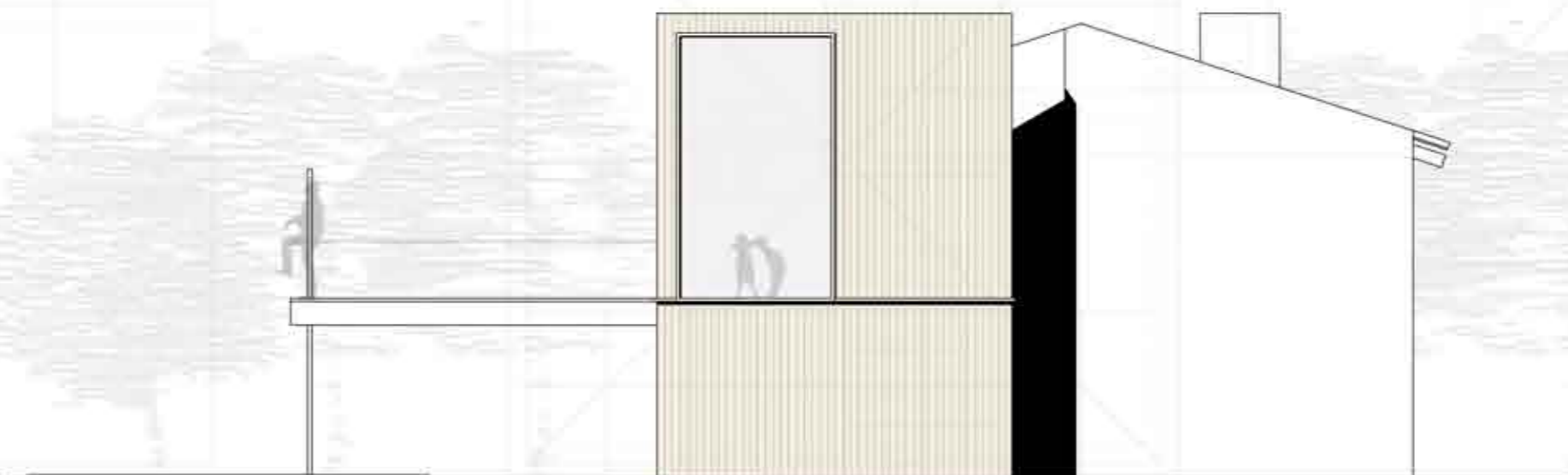
**a room with a view**



prospetto sud

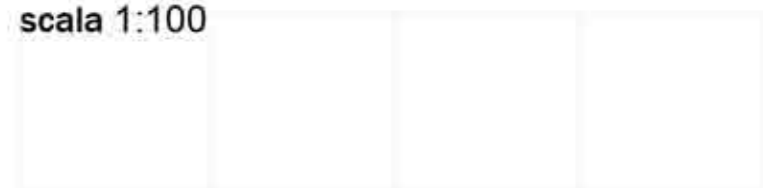


prospetto nord

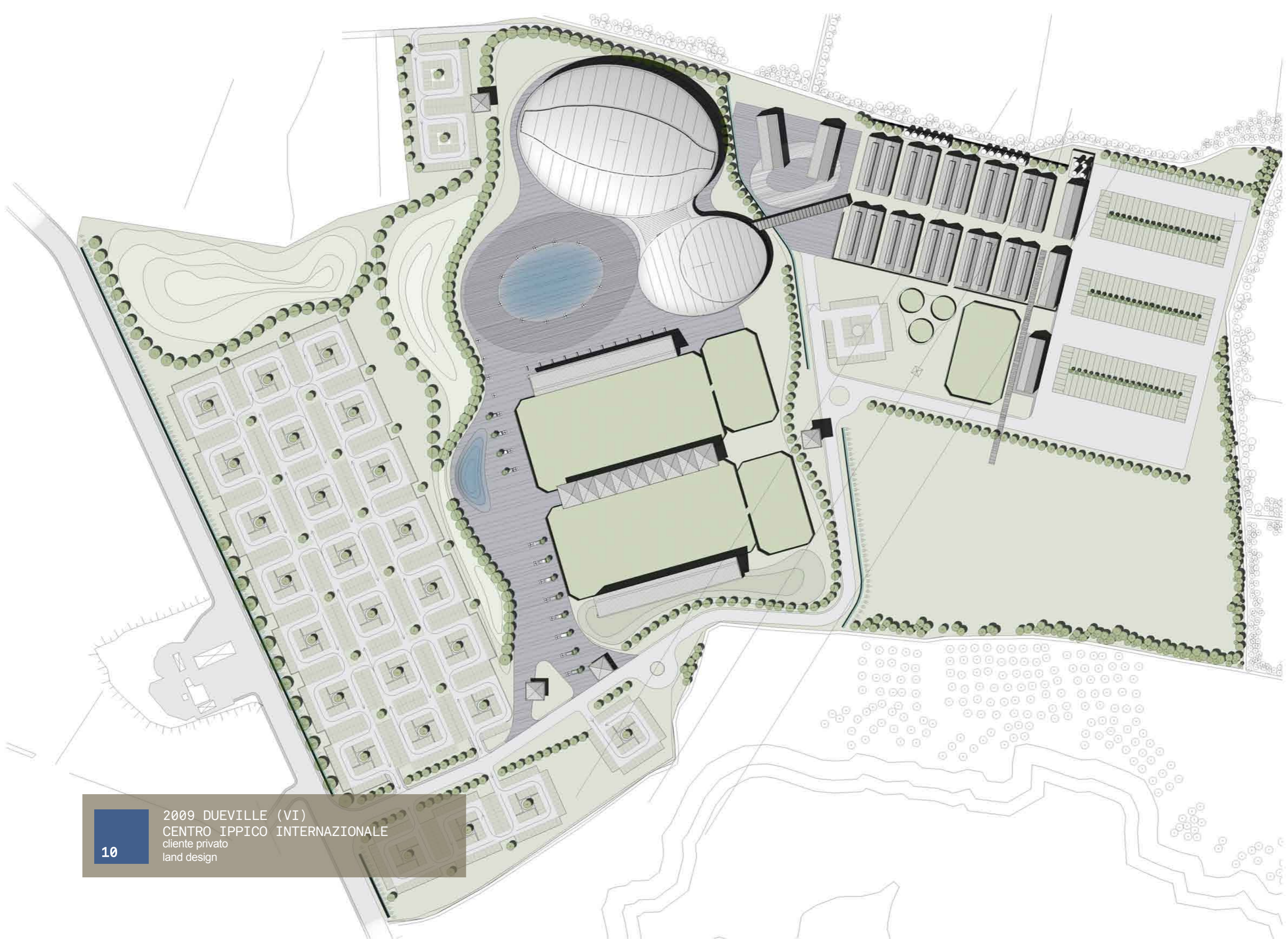


prospetto ovest

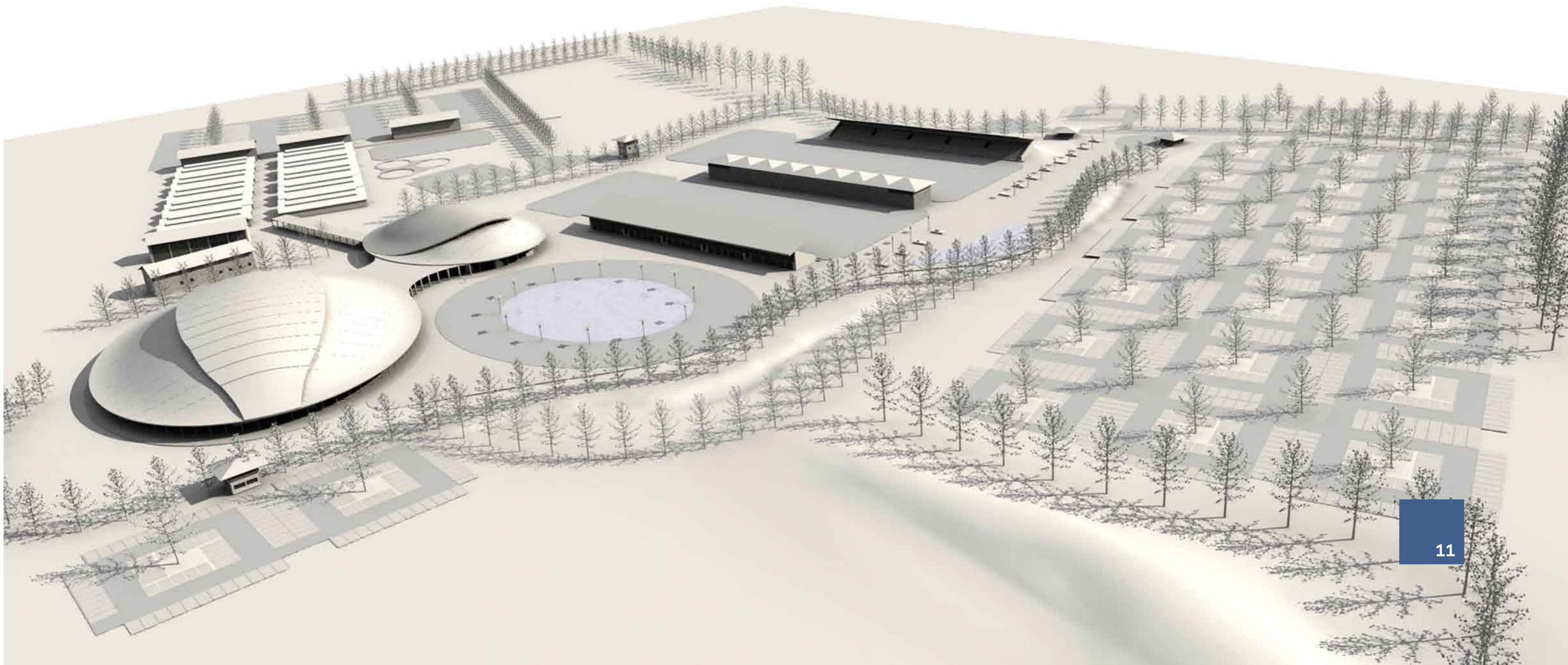
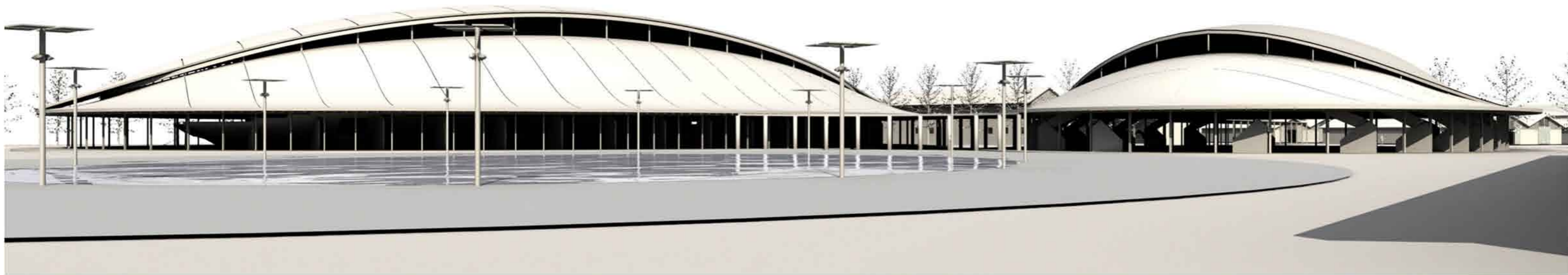
scala 1:100







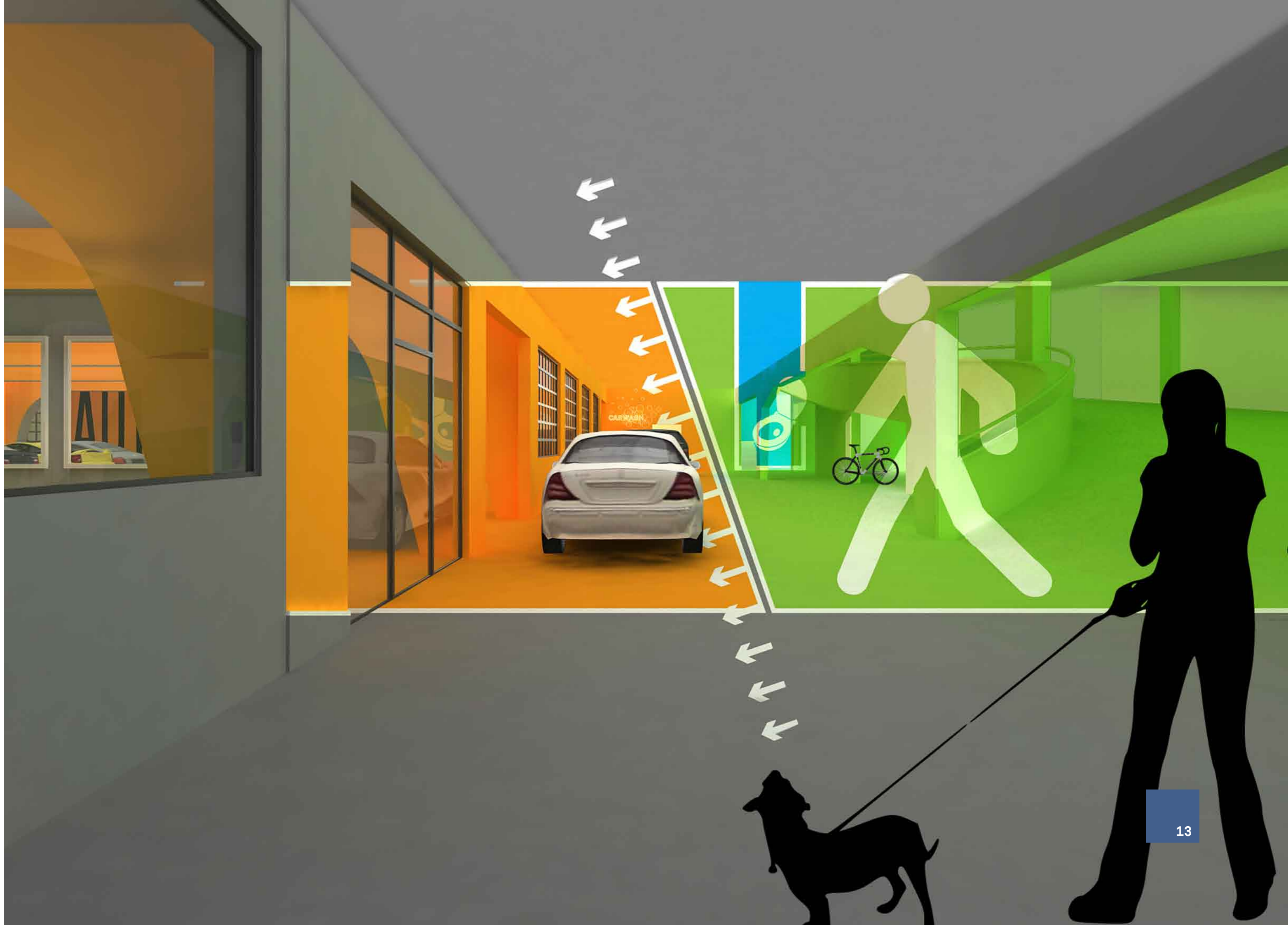














14 2005/9 PESARO  
SHOOW ROOM MANIFF. F.LLI GAMBA  
cliente privato  
nuova realizzazione





































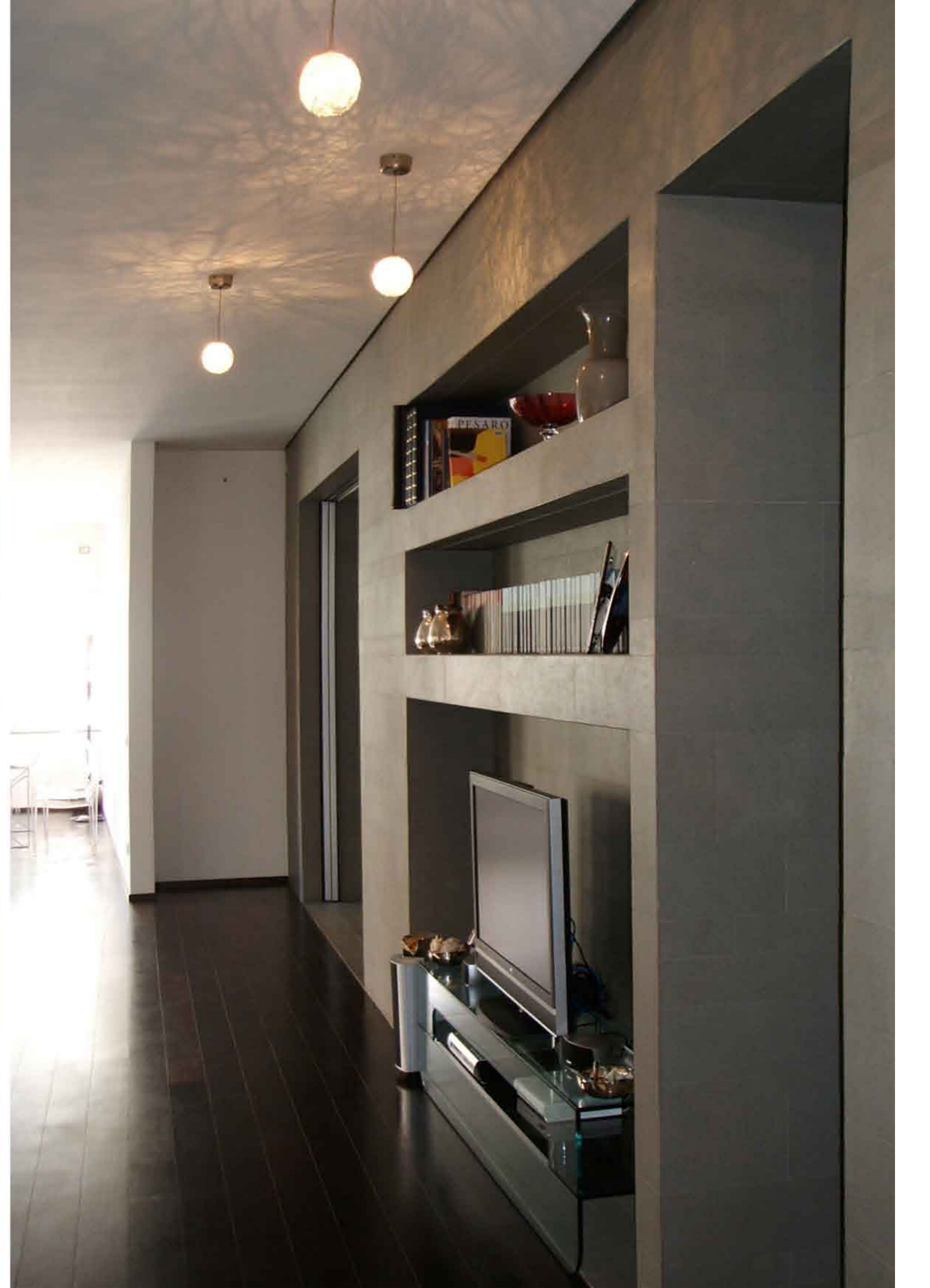


















2009  
NEGOZIO CLUB DELLA MODA  
cliente privato  
concept - progetto preliminare









32 2005 ACQUALAGNA (PU)  
RESIDENZE CANDIGLIANO  
cliente Olvia s.r.l.  
nuova realizzazione





















2006 CESENA  
PALAZZO CORTE DANDINI  
cliente privato  
rilevo













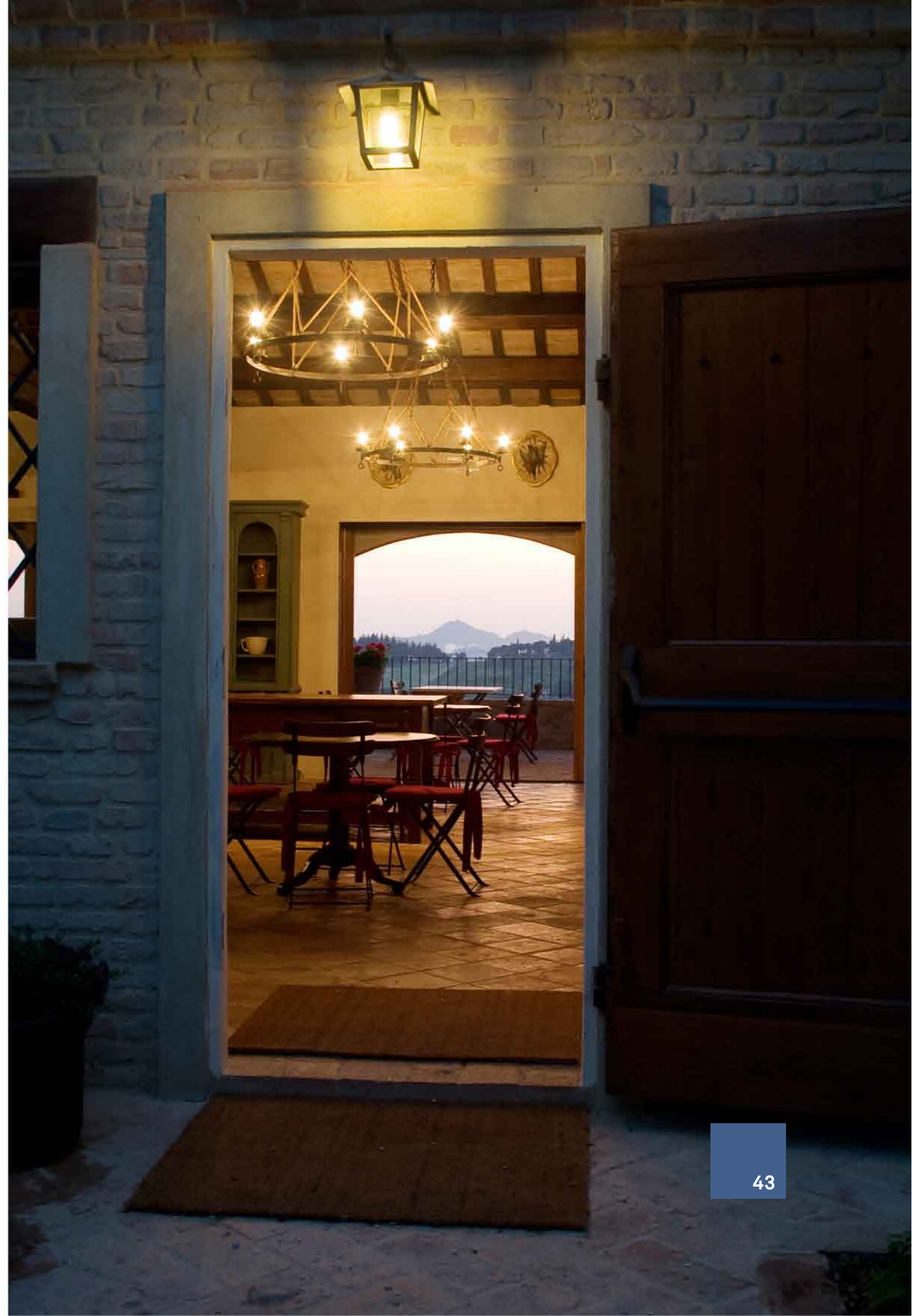
















2009 BASTIA UMBRA  
RIQUALIFICAZIONE DI VIA ROMA







Abbey Green! A green embrace by the Barking community around the precious site of the Barking Abbey, St. Margaret's church and the Primary schools.

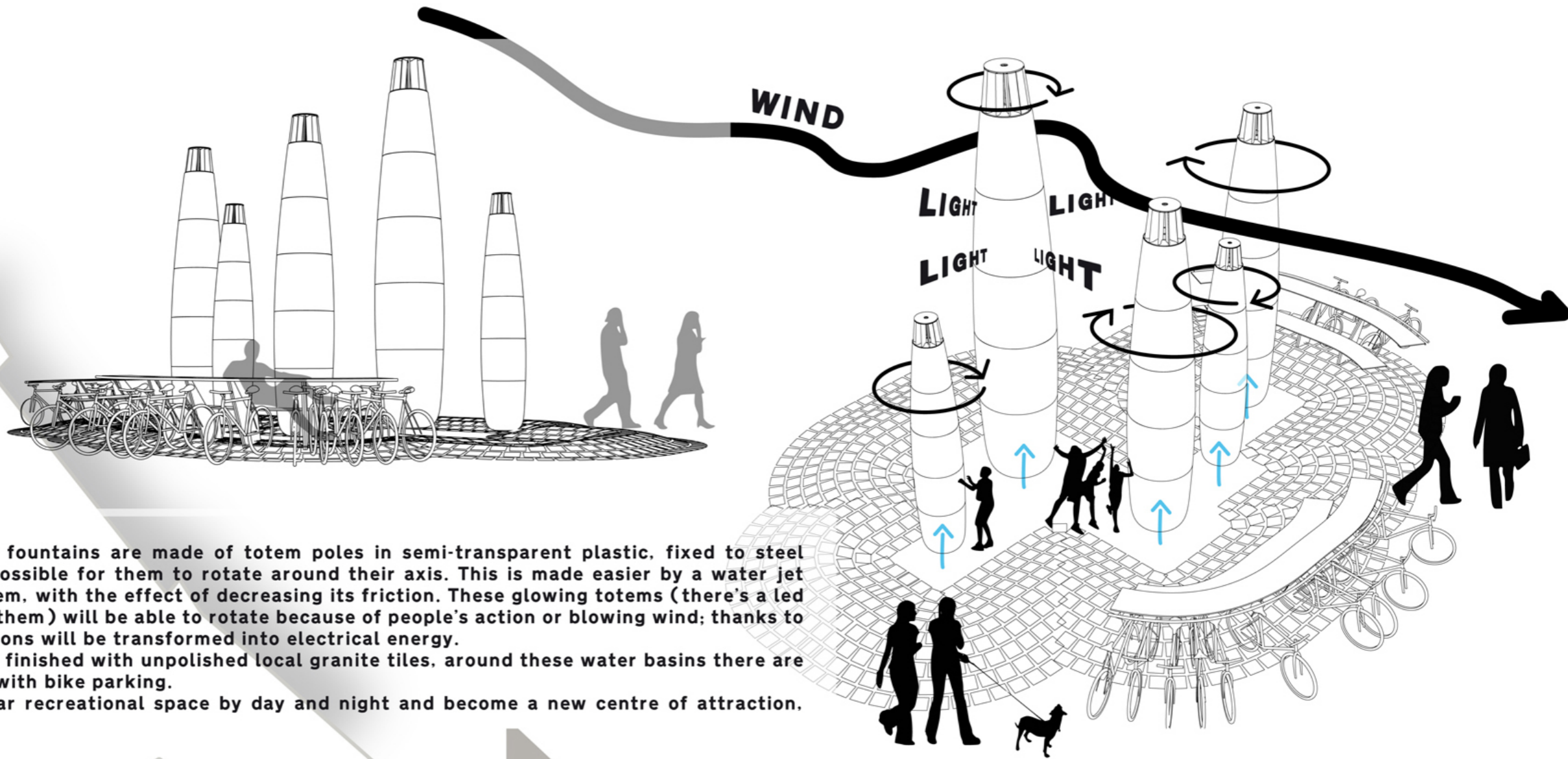
**BORDER<-->LIMIT** To Deconstruct borders in order to reconfigure them again in four different spatial models that generate the design. Breaking the border line understanding the difference between the border-line and border-strip, mental concepts that become physical entities in the contemporary city. On the west-side the border-strip is a double north-south connection, a fast track and a parallel slow track which hides itself from traffic behind medium-height green islands; on the south-side the limit is a turbulent spatial configuration: "creative rooms" to activate to practice, to perform, to sing and play, to scream, to dance, to cut-off other's noise; The east-side links the Green to the town and expose itself as a "piazza" gradually sinking in the green, allowing every speed of use; north-side are Logic+Discipline Living Rooms that limit wild wet bushes: to read, meditate, to gently talk or have a lunch in a sunny day.

A "Sympathetic Connective System" crosses the Green, a wide section track that allows every speed and out-door activity: to meet, to compare, to play, to exhibit. Abbey Green becomes a multi-speed link between Barking town, the Broadway Theatre, the Malthouse Studios and Newham. Not just a walk-through but a new Heart for a wider community where everyone finds a spot to express himself.





The project started from this idea and envisioned a new arrangement for the square, where the column with the lure players statue becomes the central obelisc around which social life goes on. In relationship with this obelisc are the hydro-aeolian monumental fountains that will be a new centre of attraction in the square (they become modern icons of contemporary social life, as they recall the ancient icons in the centre of roman horse race tracks, simbolizing not only divinities but also the challenging teams and the political and religious power of the time).



The hydro-aeolian monumental fountains are made of totem poles in semi-transparent plastic, fixed to steel columns in such a way that is possible for them to rotate around their axis. This is made easier by a water jet coming from underneath the totem, with the effect of decreasing its friction. These glowing totems (there's a led lighting system hidden inside of them) will be able to rotate because of people's action or blowing wind; thanks to an internal mechanism the rotations will be transformed into electrical energy. Totem poles stands on fountains finished with unpolished local granite tiles, around these water basins there are various double decker benches, with bike parking. These fountains create a peculiar recreational space by day and night and become a new centre of attraction, especially for pedestrians.



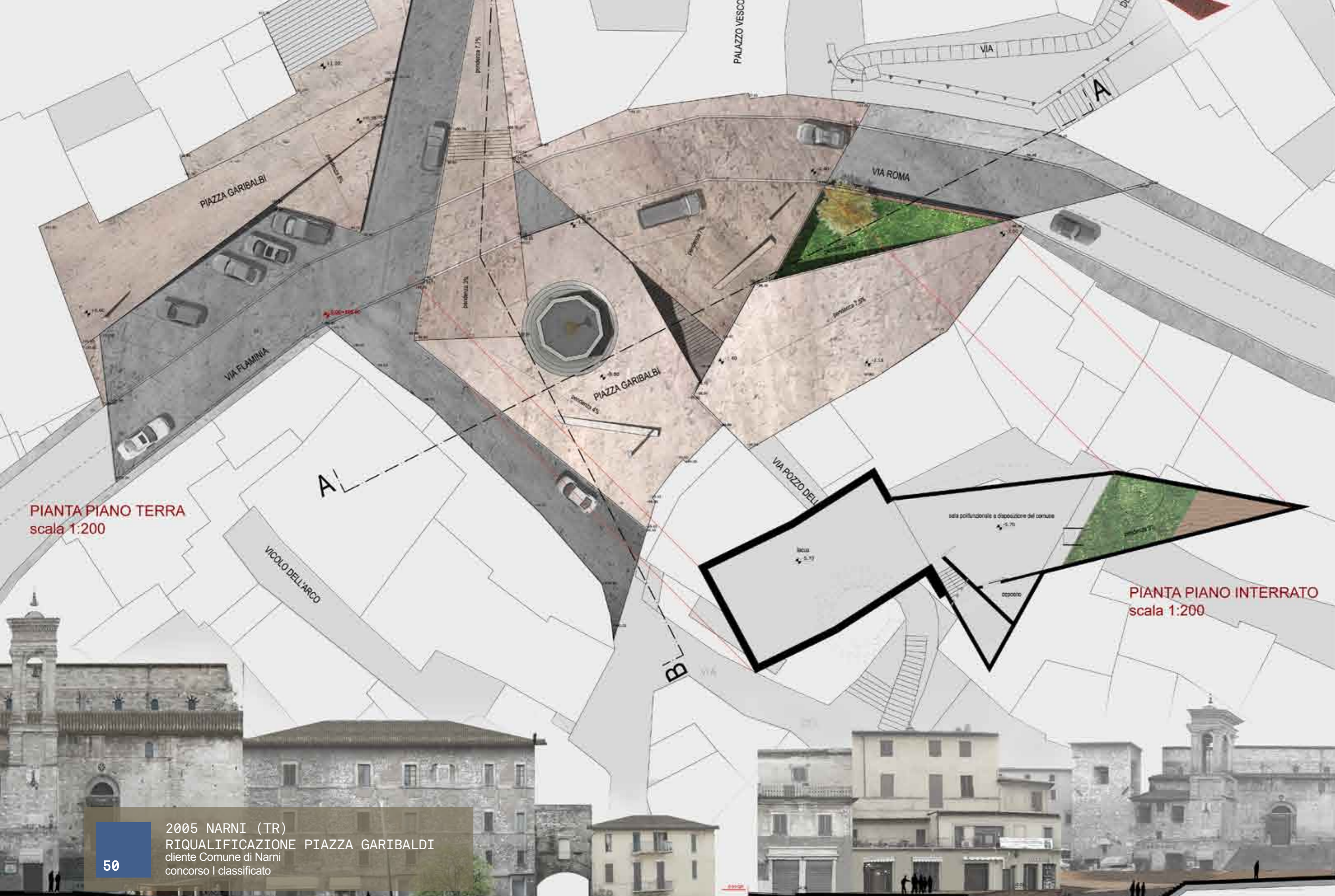


2009 FUCECCHIO  
DUE PIAZZE PER FUCECCHIO



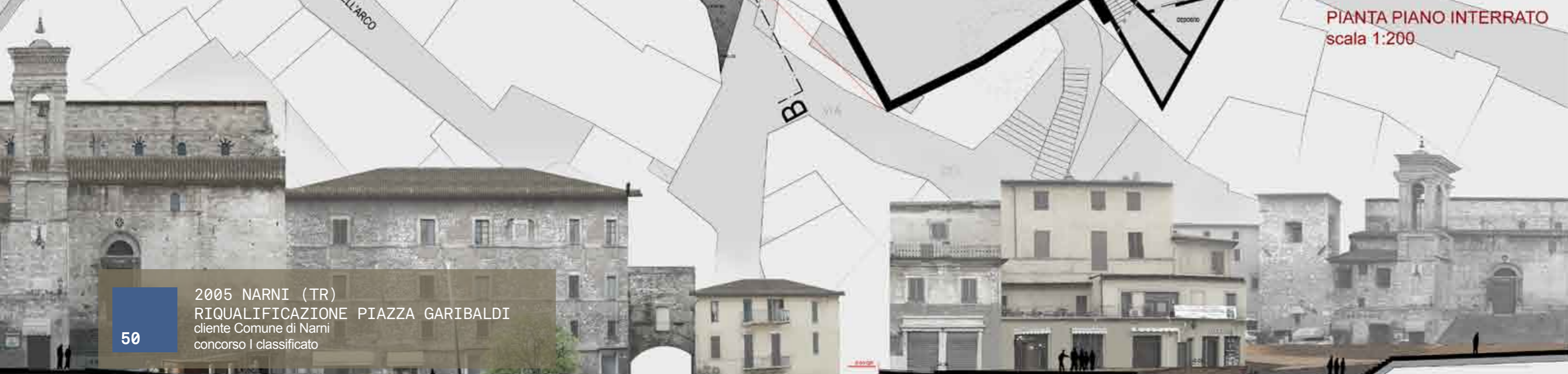






PIANTA PIANO TERRA  
scala 1:200

PIANTA PIANO INTERRATO  
scala 1:200



SEZIONE A-A  
scala 1:200

SEZIONE B-B  
scala 1:200









2007 SORA (FR)  
RIQUALIFICAZIONE PIAZZA INDIPENDENZA

52

concorso





2009 ODERZO (TV)  
RIQUALIFICAZIONE PIAZZA CASTELLO

concorso





2007 CATANZARO  
RIQUALIFICAZIONE PIAZZA MATTEOTTI

54

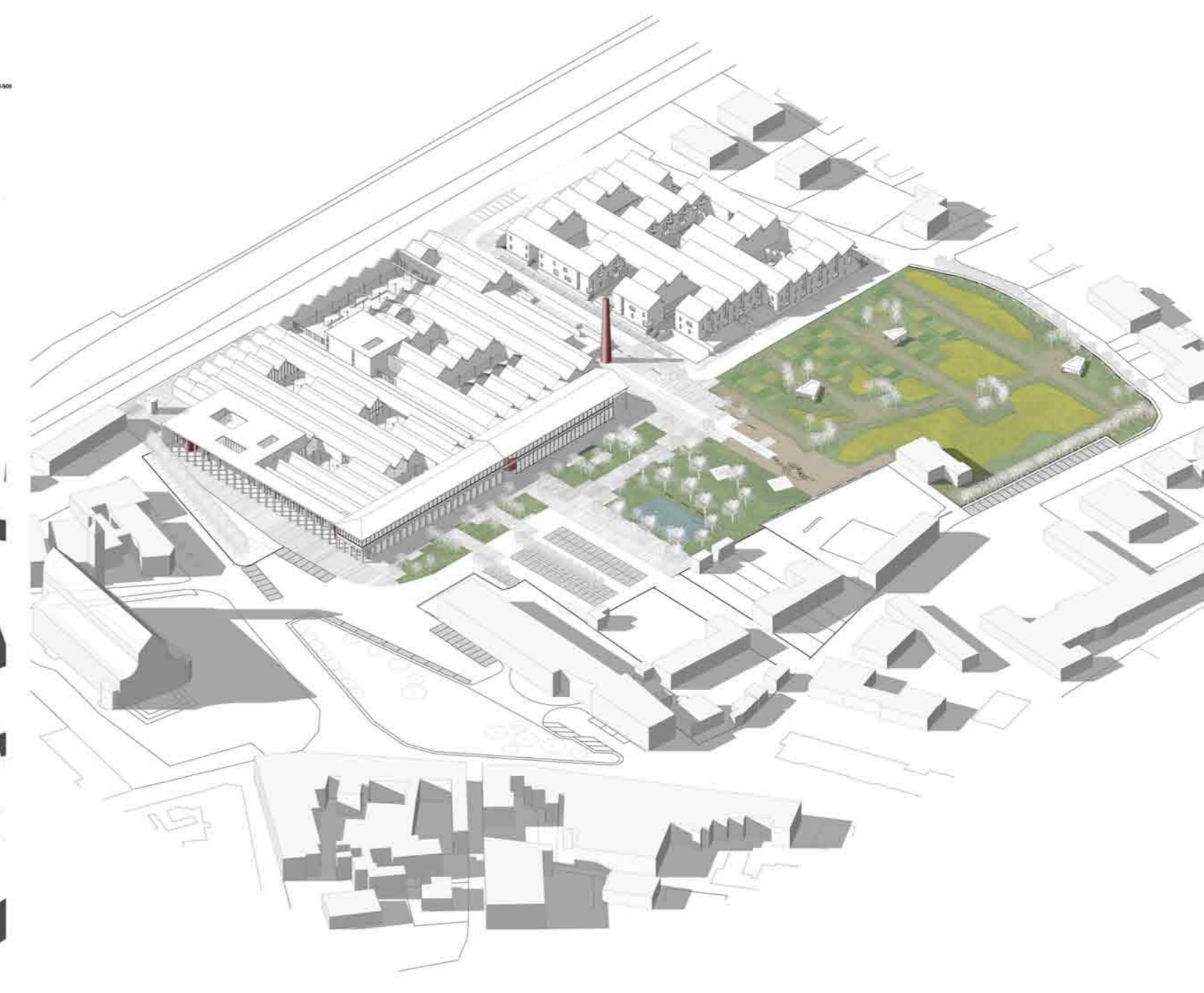
concorso III classificato



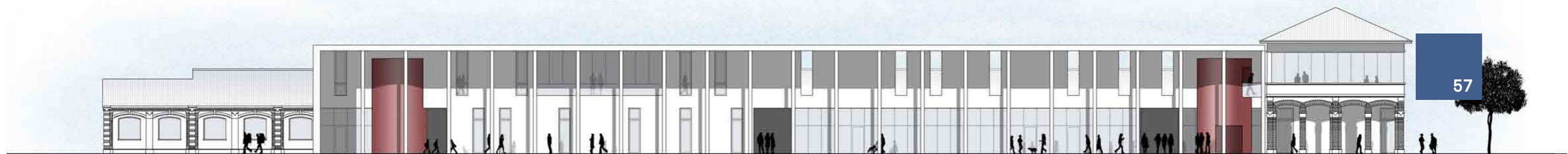


2009 BERLIN (DE)  
MONUMENTO PER L'UNIFICAZIONE DELLA  
GERMANIA  
concorso













2006 NOVENTA PADOVANA (PD)  
NUOVA SCUOLA DI NOVENTA PADOVANA  
concorso IV classificato ex-equo

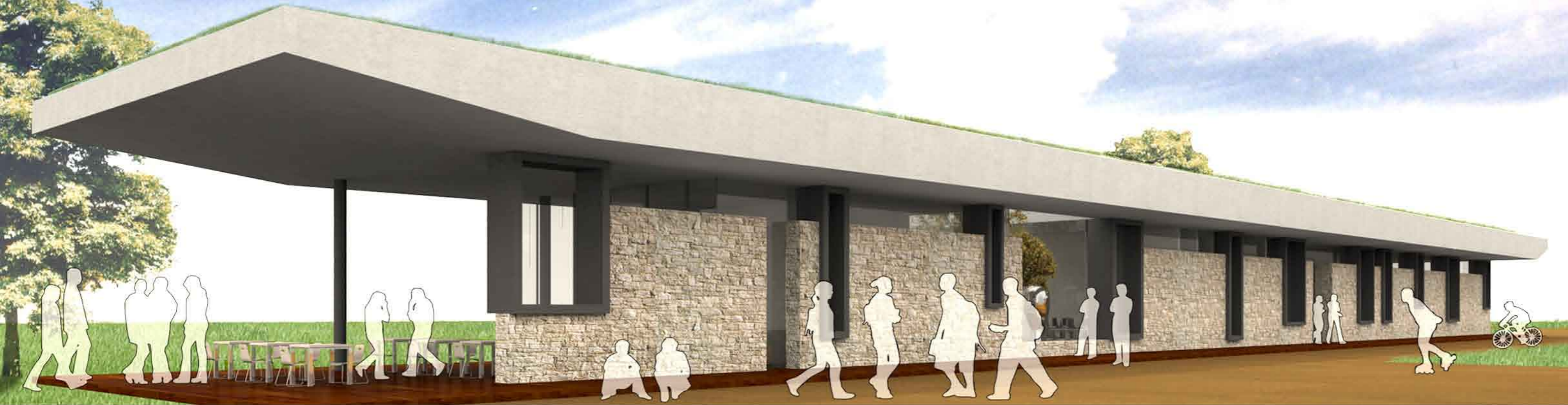




2009 STOCKTON-ON-TEES (UK)  
MAKE ME A HOME

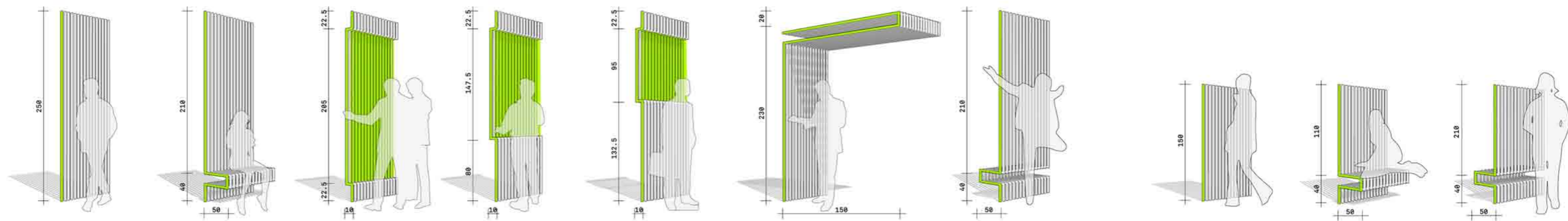
concorso





2006 MASERADA SUL PIAVE (TV)  
MASTERPLAN E MUSEO-BIBLIOTECA

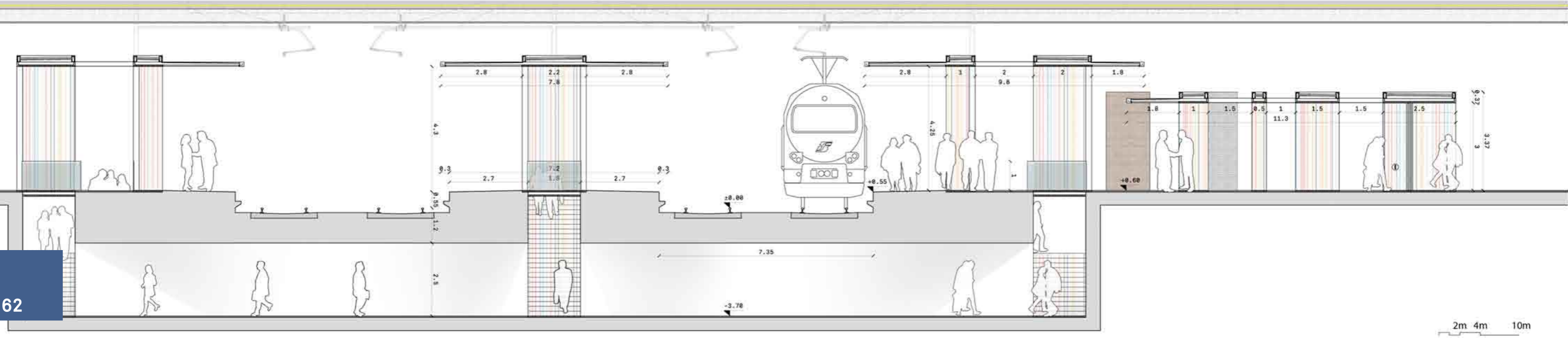
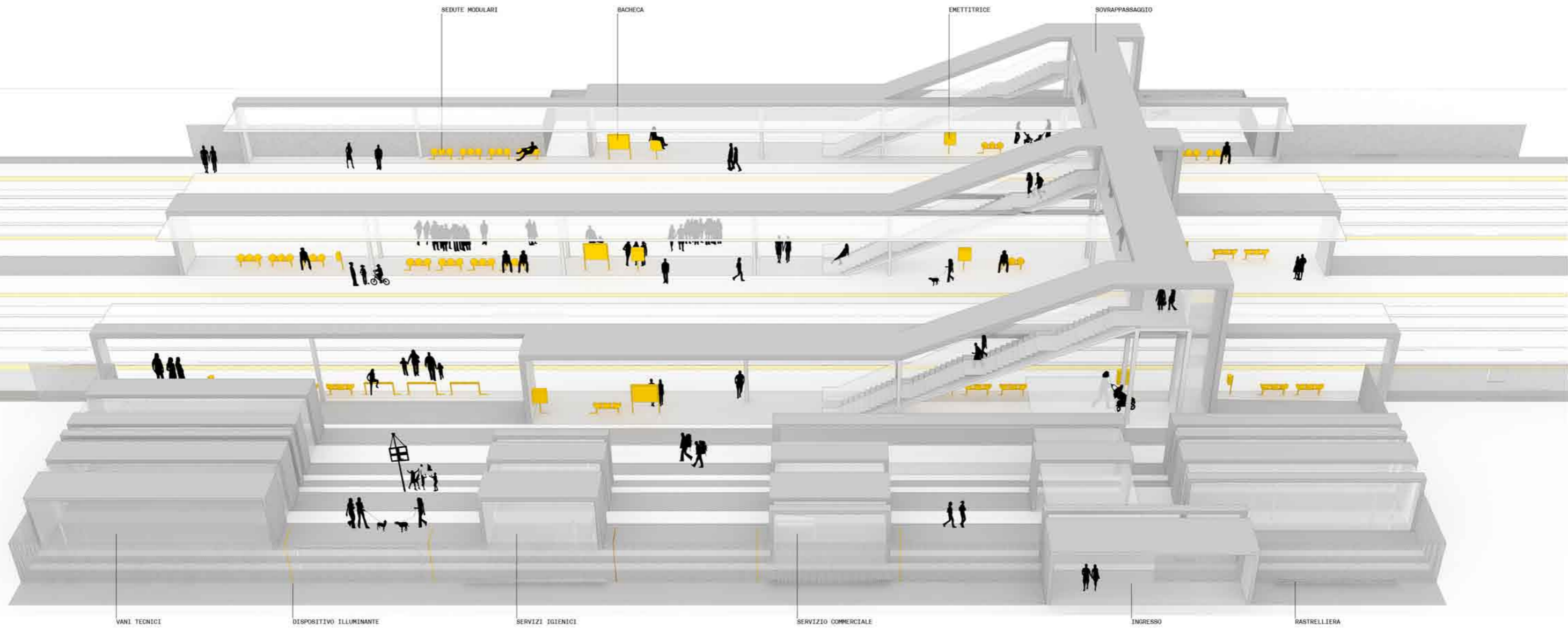




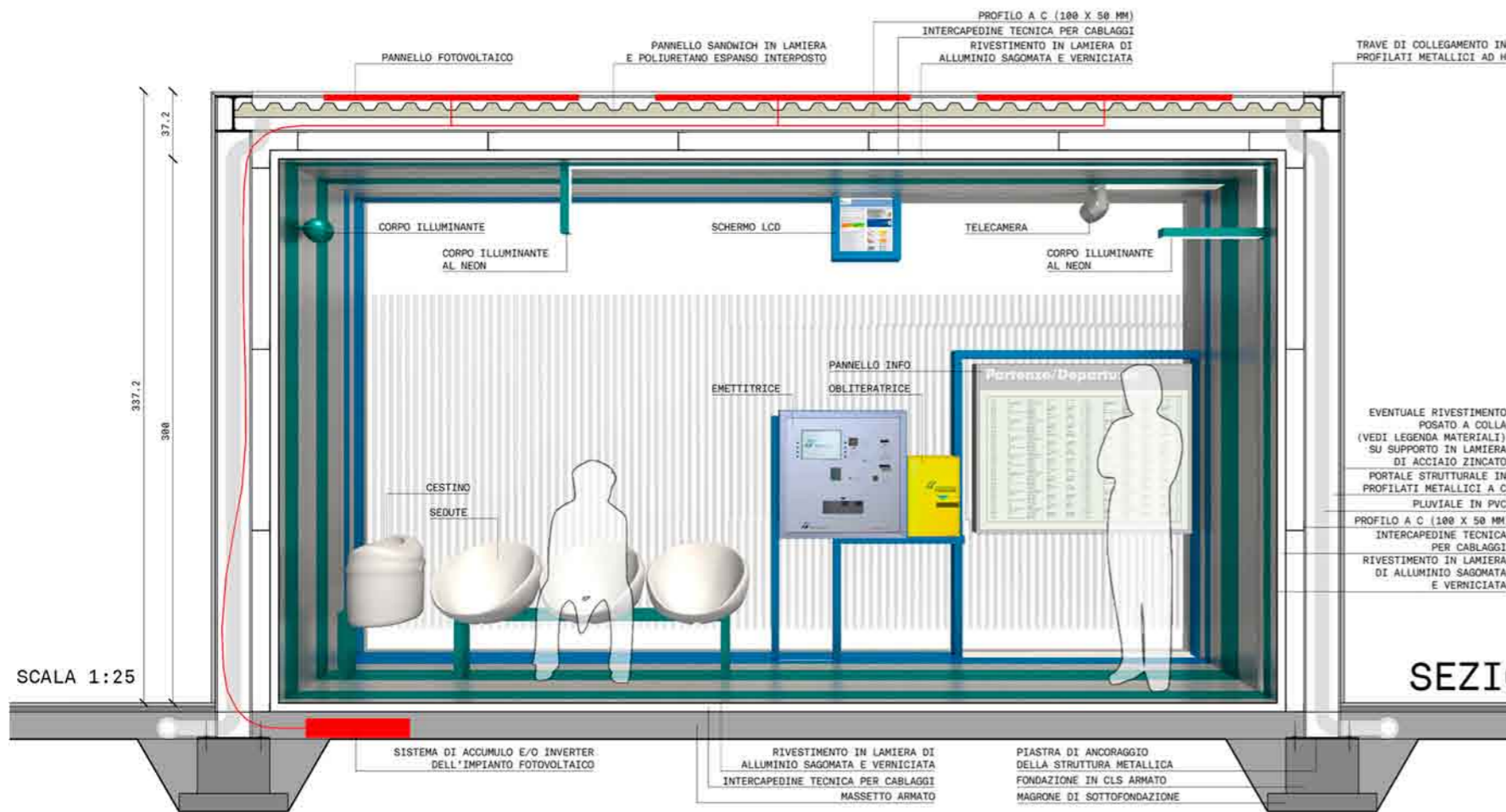
2007 ITALIA  
PICCOLE STAZIONI FERROVIARIE R.F.I.

concorso

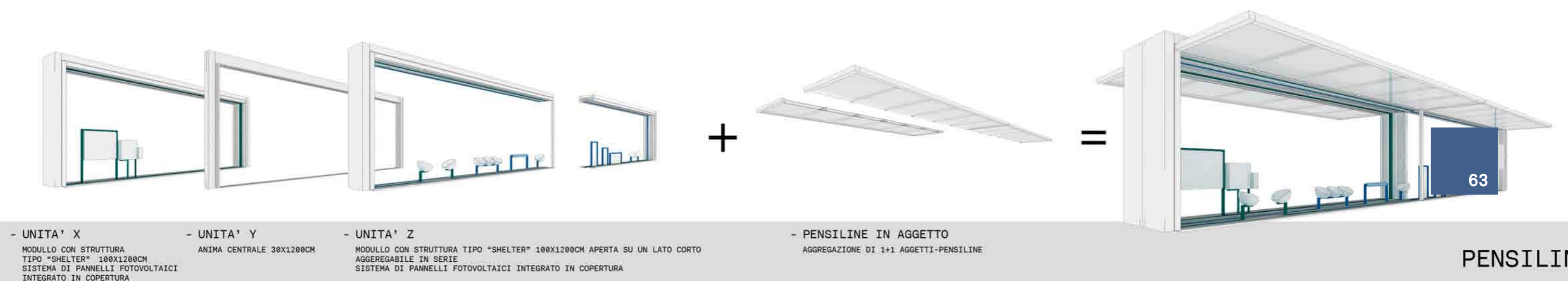
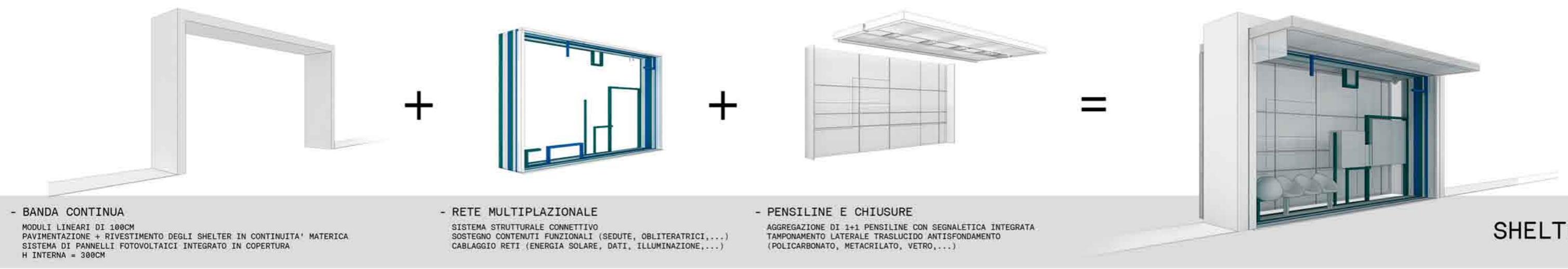
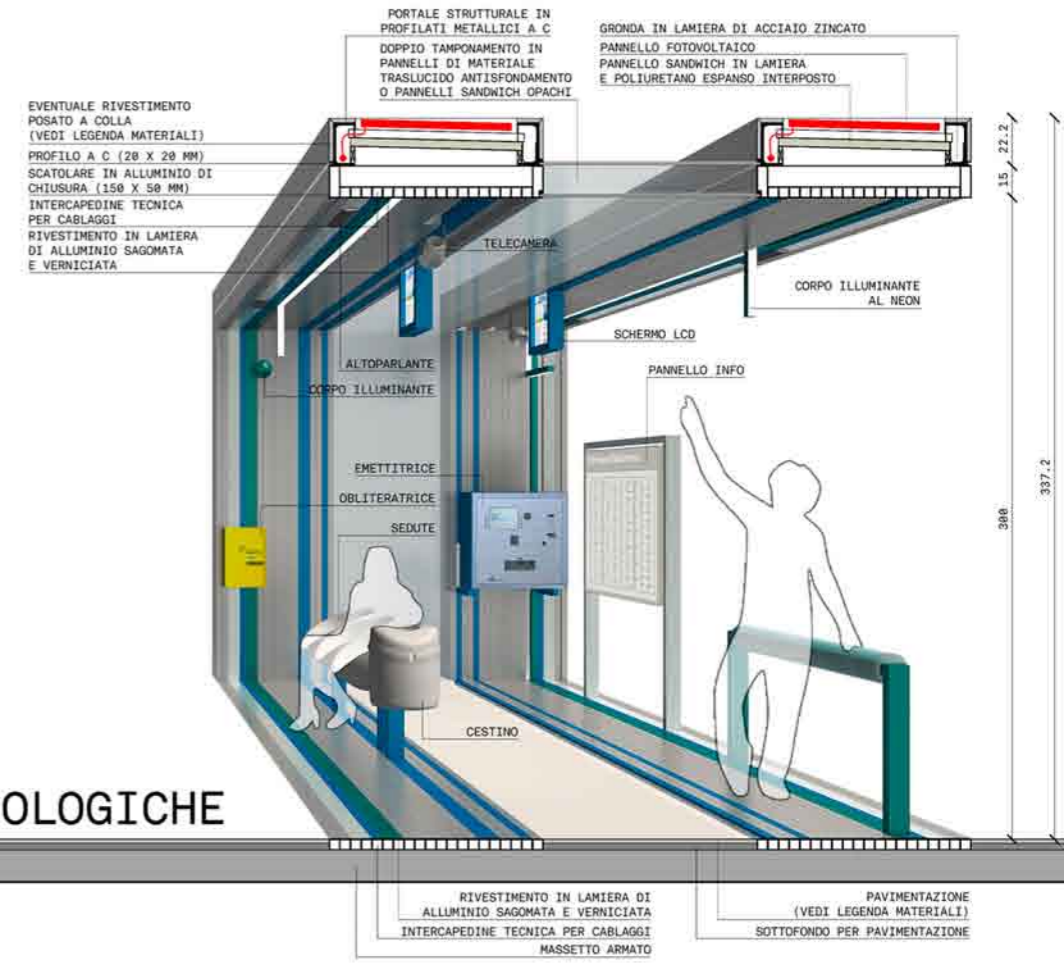








SEZIONI TECNOLOGICHE





















# 00000 <INTRO>

En la escuela **Rinzai**, o escuela del "cambio improviso", el alumno participa a coloquios formales con el maestro, llamados **sanzen**, durante los cuales tienen que expresar sus opiniones acerca del **kōan** que esta intentando resolver. La solución de un **kōan** - pregunta acerca de la natura mas profunda de las cosas que no tiene respuesta cierta y racional- necesita largos periodos de concentración durante de los cuales se adopta la misma posición de la escuela de **Sōtō** (meditación sentada - o **zazen**- que tiene que ser silenciosa y sin objeto).

Parece que maestros espertos sean capaces de entender cuando el alumno esta cerca del umbral de un insight y puedan ayudarle a acercarse a esta experiencia con actos inesperados, espontáneos y improvisos, que sirven para bloquear el proceso de pensamiento conceptual.

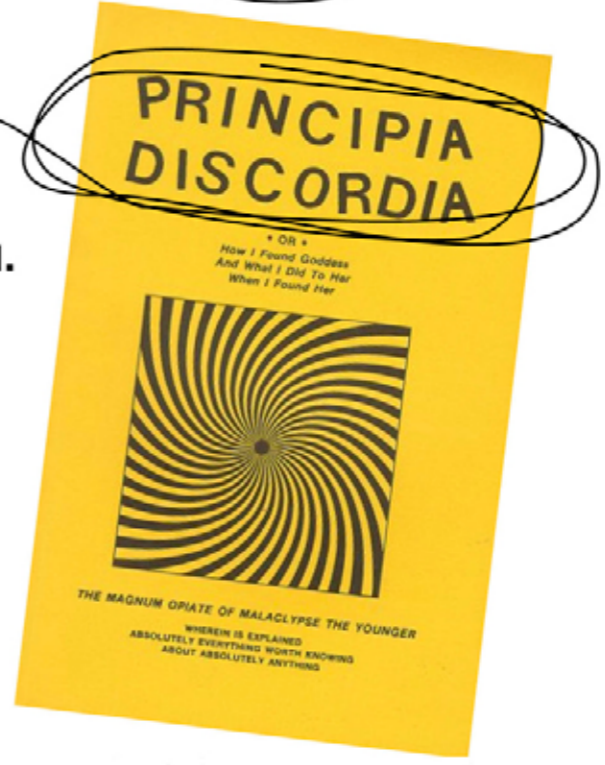


Este kōan esta al principio de los **Principia Discordia**:

**GREATER POOP: Eris** es real?  
**MALACLYPSE THE YOUNGER (MAL 2):** Cualquier cosa es real.  
**GP:** El irreal tambien?  
**M2:** Tambien el irreal.  
**GP:** Como puede ser?  
**M2:** Yo que sé, no he sido yo a hacerlo.

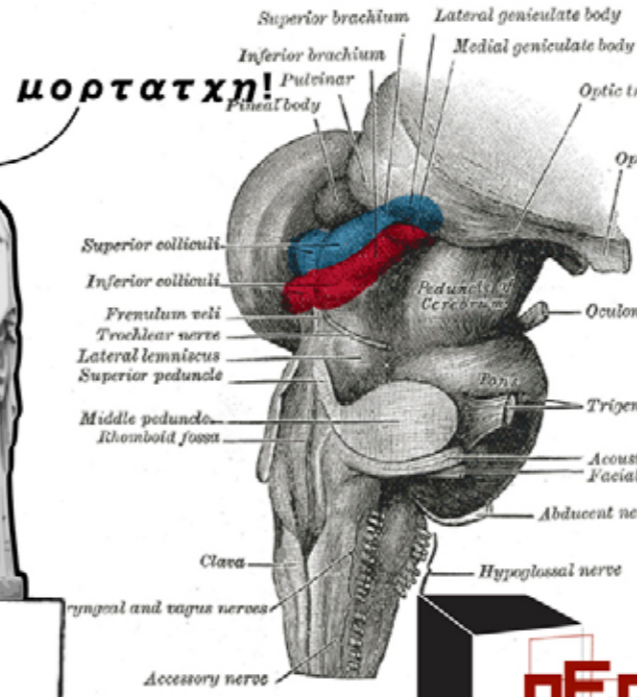
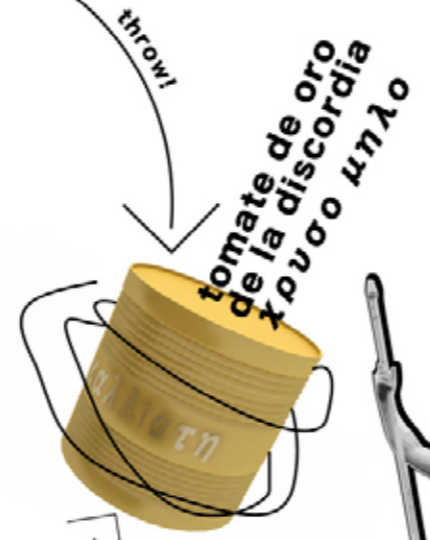


**CHAOS**  
 Common  
 Hypnopompic  
 Awakening  
 OrAcLE  
 Orbital  
 Active  
 Limbic  
 Element



La **glándula pineal**, o epífisis está situada en el techo del diencefalo, entre los tubérculos cuadrigéminos craneales, en la denominada fosa pineal. Esta glándula se activa y produce melatonina cuando no hay luz. Mide unos 5 mm de diámetro. Gracias a su posición central y a su aspecto le han sido atribuidos poderes magicos y por lo tanto esta conocida tambien como "tercer ojo". Según la medicina oriental las informaciones recibidas desde los campos de energia sutil vienen decodificadas y enviadas a la columna vertebral como vibraciones, gracias a la glandula pineal. En el ámbito filosófico, René Descartes pensaba que la glándula pineal era aquello que conectaba el cuerpo (**res estensa**) con el alma (**res cogitans**), o que la contenía. Los **Discordianos** pensaban que consultando la **glándula pineal** se puede obtener la respuesta a las preguntas mas difíciles sobre la vida.

En el banquete de boda de **Teti** y **Peleo** fueron invitados **todos los dioses, menos una: Eris**, la diosa de la discordia. Esto hizo enfurarse a la diosa la cual trajo una **manzana de oro** en cima de la cual habia escrito **καλλιστη** (= **a la mas guapa**) y que lanzó en el salon del banquete. Entonces tres de las diosas invitadas, **Athena, Era** y **Afrodite**, quisieron la manzana para ellas. Zeus decidió que se elegiese un juez y nombró **Paride**. Las tres diosas ofrecieron al hombre algo para corromperle: **Athena** ofreció victorias heroicas en guerra, **Era** grandes y riquezas, y **Afrodite** el amor de las mujeres mas hermosa de la tierra. **Paride** elijo la ultima y **Afrodite** hizo lo que pudo para que **Paride** pudiese tener a **Elena**, que estaba casada con **Menelao**, rey de **Sparta**. Así empezó la guerra de **Troia**, porque **Menelao** devolvie



**DO NOT CIRCULATE**

2009 BILBAO (E)  
 II FESTIVAL INTERNACIONAL BILBAO JARDIN  
 The Classical Greeks were not influenced by the Classical Greeks









2008 10eme FESTIVAL  
DES JARDINS DE METIS (CANADA)

70

Concorso





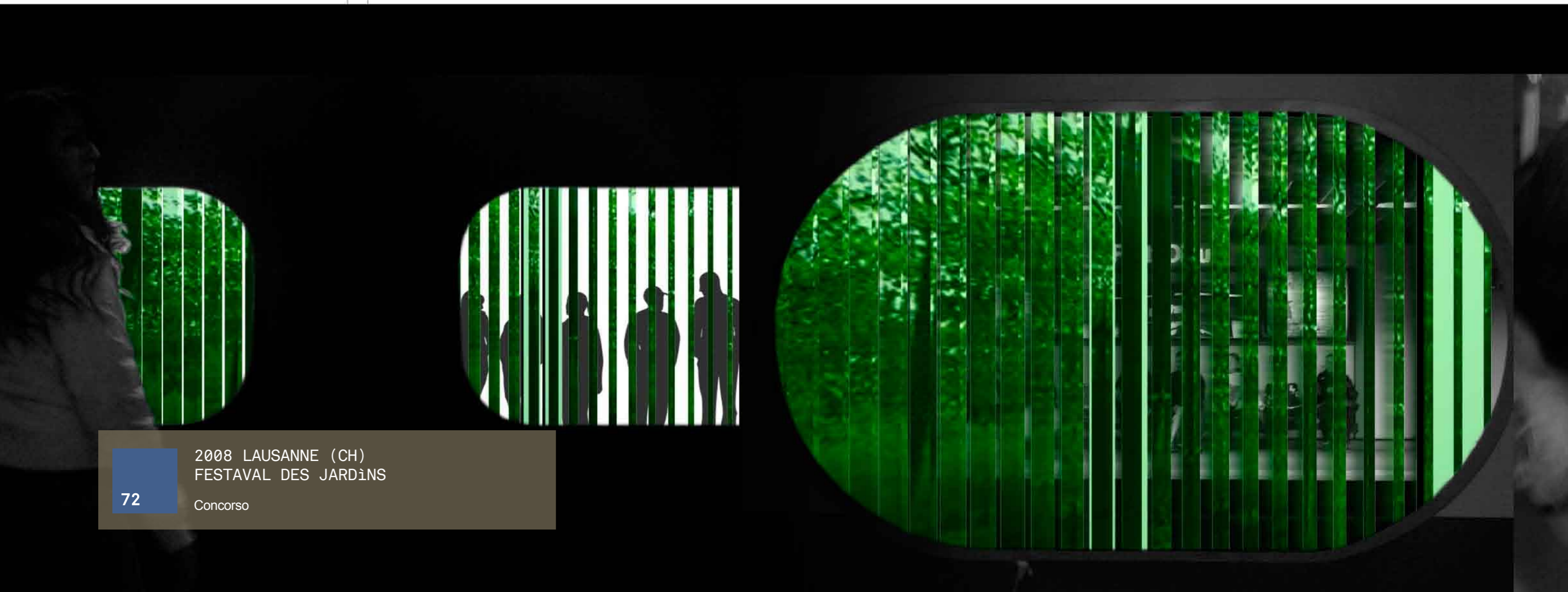


# 01

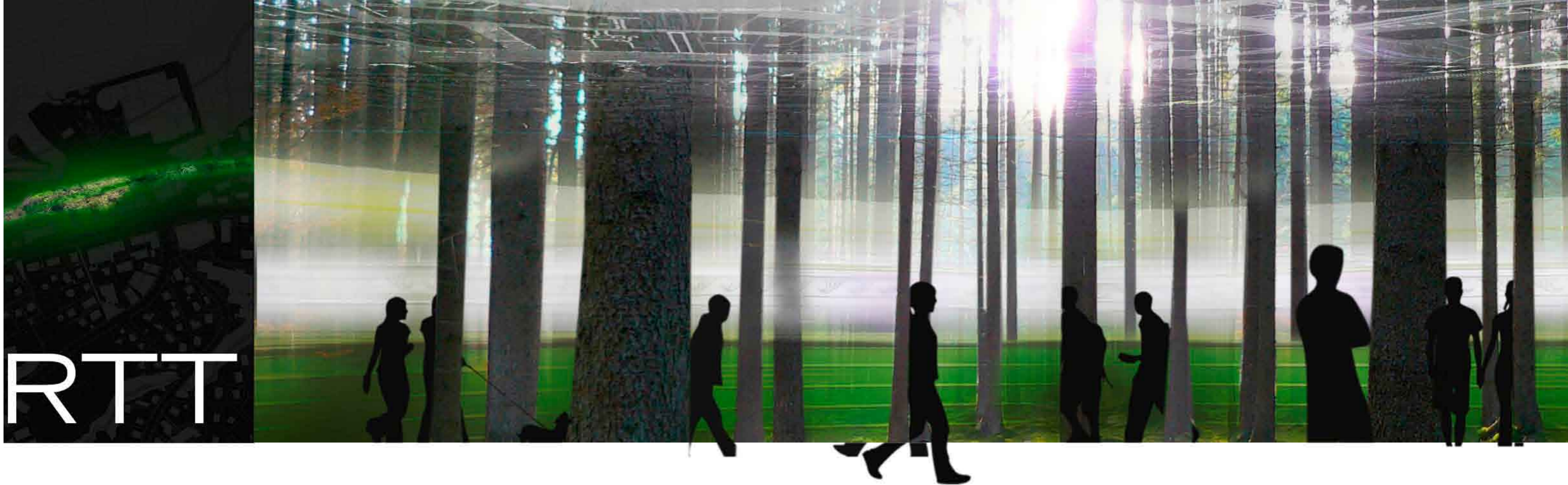
## PATHWAY N.5 - SUBWAY LINE M2

# THE EDGE OF THE WOOD

M2Y











74 2007 9° FESTIVAL  
DES JARDINS DE METIS (CANADA)  
Concorso

# ZAPPING

[ déjà vu Canadienne ]

candidature à la  
FESTIVAL INTERNATIONAL DE JARDINS  
JARDINS DE METIS 9e Edition - 2008

powered by  
**nEMOS**

**nEmaGruppen**  
nEmaGruppen  
architetti  
via F. Bocchi 11r  
50126 Firenze IT  
tel +39 0558517269  
info@nemagruppen.com





2007 SIENA  
IL GIARDINO DEGLI OM  
cliente privato  
garden design





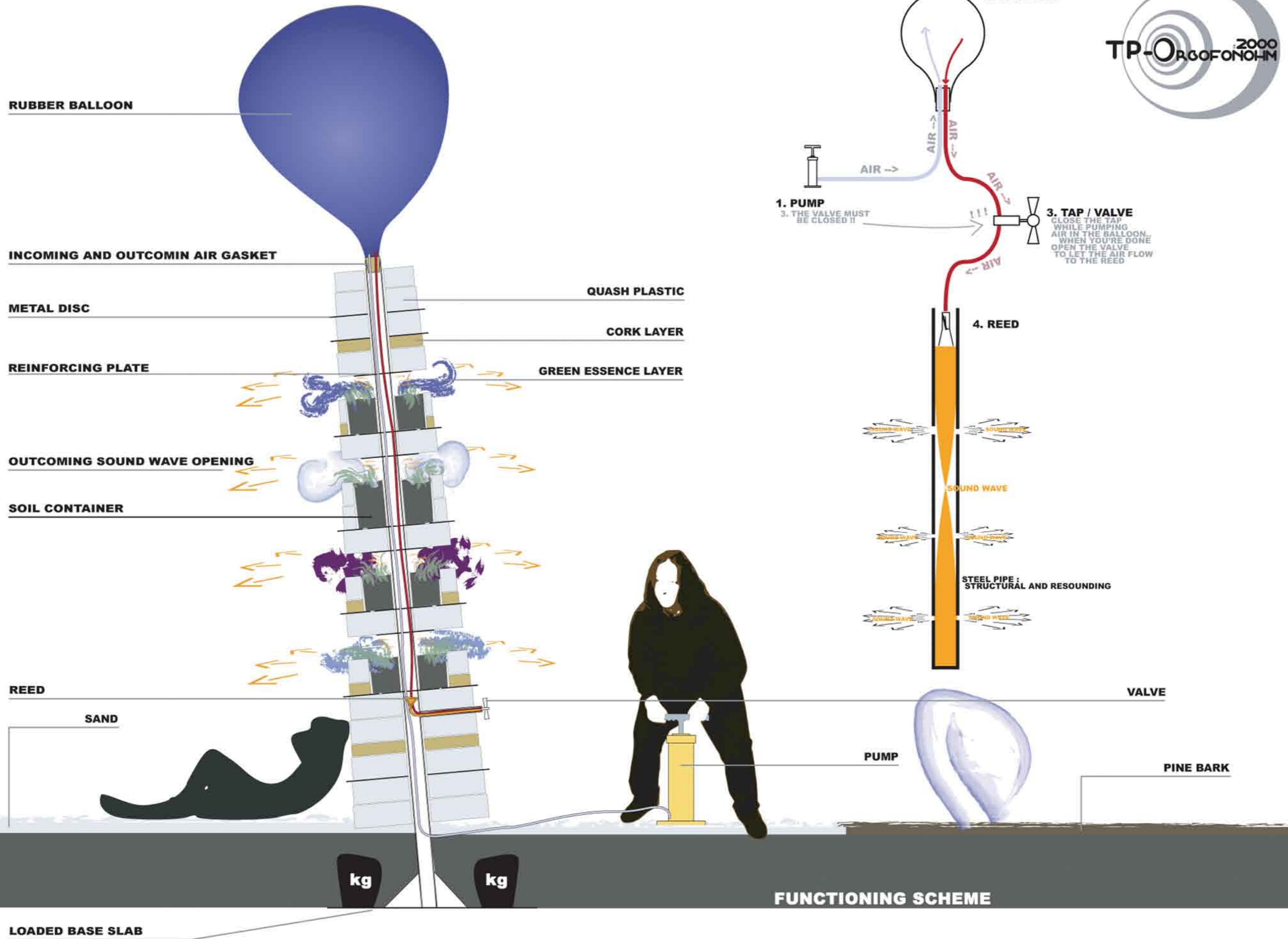
2007 BILBAO (E)  
CONCURSO DE "BILBAO JARDINES 2007"













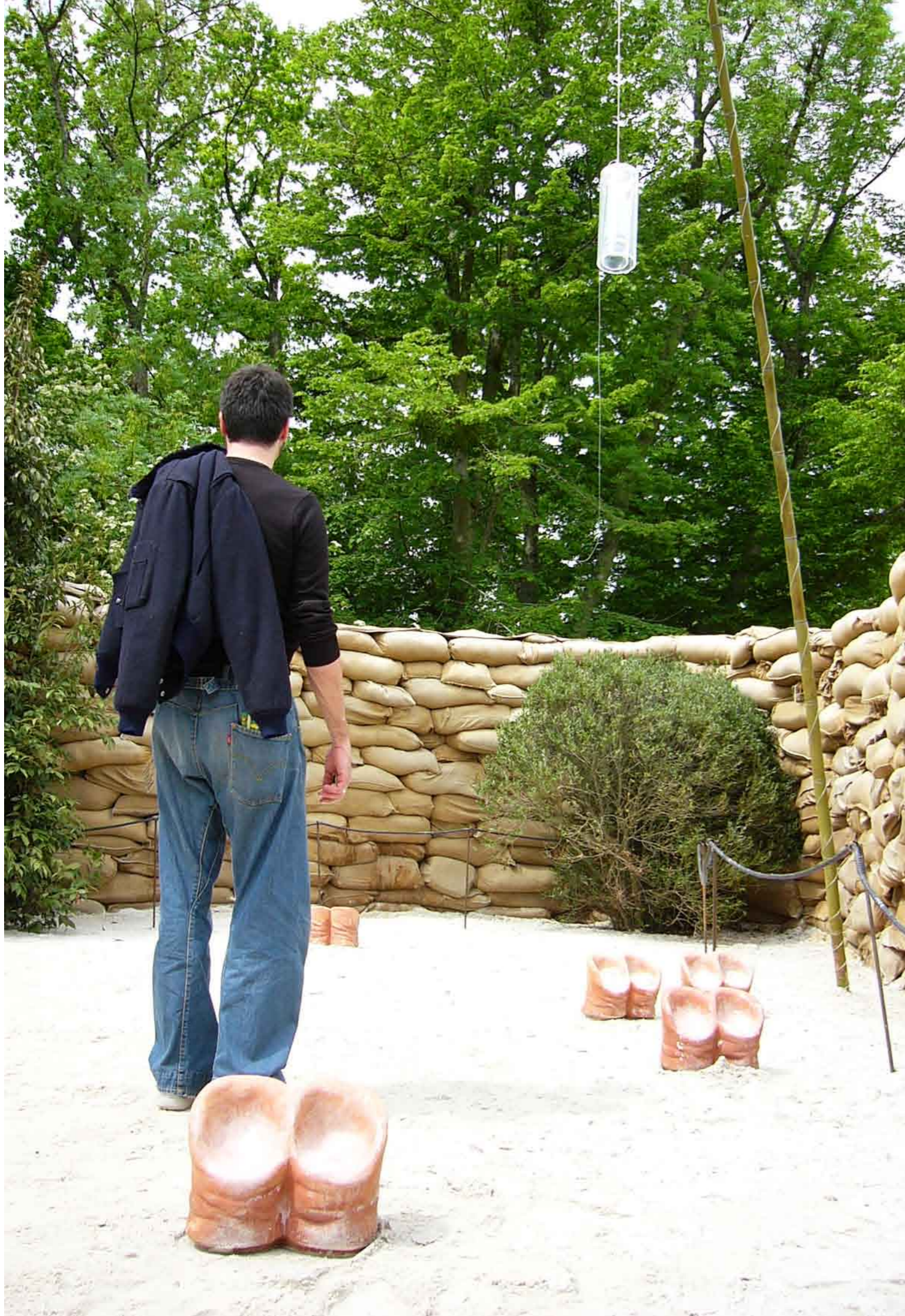






2006 CHAUMONT-SUR-LOIRE (FR)  
15° FESTIVAL DES JARDIN  
cliente Conservatoire de Chaumont-sur-Loire  
landscape design - sound garden

















2004 ODERZO (TV)  
MONUMENTO AD ALBERTO MARTINI  
cliente Comune di Oderzo  
nuova realizzazione















